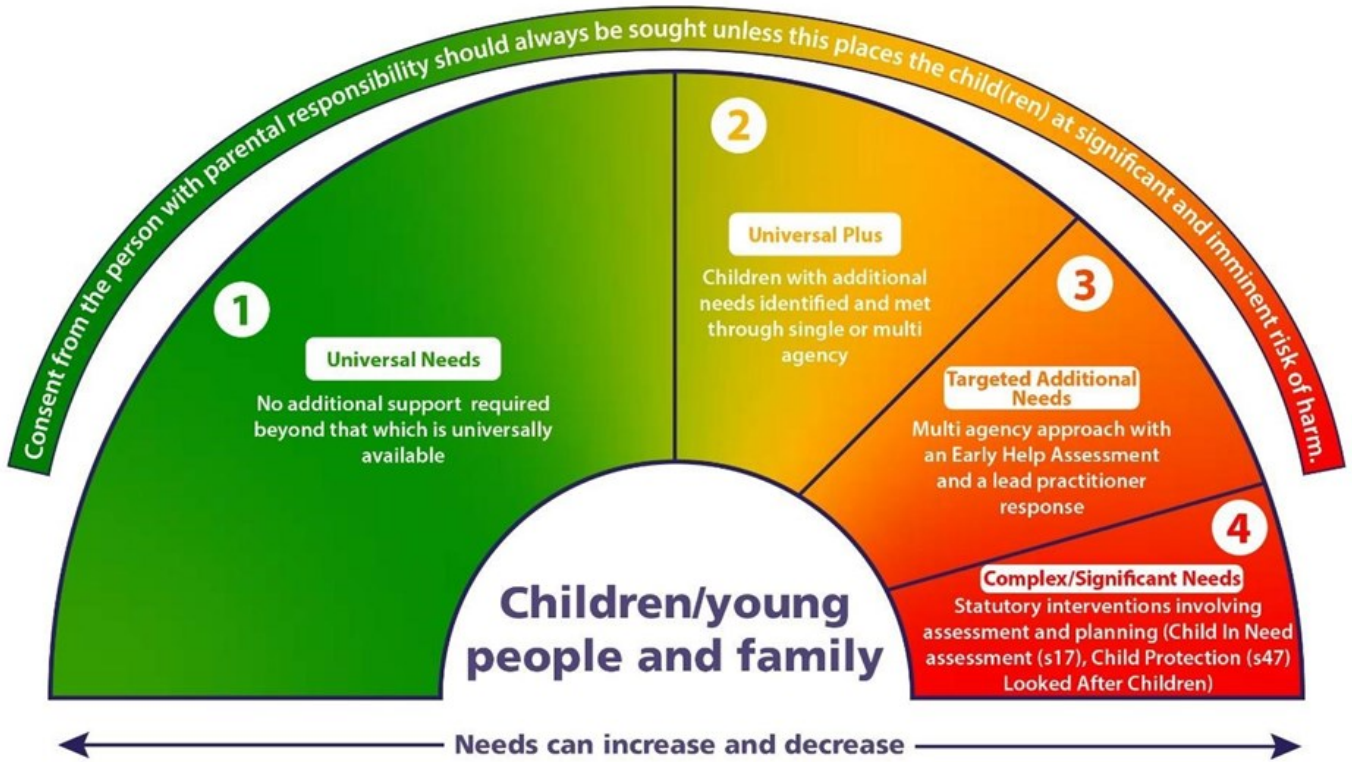


Sandwell Targeted Early Help



Universal Plus	Targeted Early Help
<p>Interventions completed by Children Centre are similar to Targeted Early Help but what is different is the level of risk attached to the area of concern that determines where it sits.</p> <p>Family Support: Within the home Poor Home Conditions Boundaries/Safety within the home Healthy Relationships Emotional well-being Self-esteem work Coping mechanisms Personal boundaries and awareness Parenting Support Behavioural Support in the Home Protective Behaviours Interventions Routines and Boundaries Appropriate/Inappropriate Chastisement Budgeting Healthy Eating Child Exploitation: Digital Safety for parents/Young People Healthy Relationships</p> <p>Please be mindful a TAF at Universal Plus level can also be held by school, health and other partners if there is a active role for them and they are Lead Professional trained.</p>	<p>Family Support: Within the home Poor Home Conditions Boundaries/Safety within the home Healthy Relationships Budgeting & low debt matters Healthy Eating Emotional well-being Self-esteem work Coping mechanisms Personal boundaries and awareness Resilience & Mindfulness Parenting Support Behavioural Support in the Home Protective Behaviours Interventions Routines and Boundaries Appropriate/Inappropriate Chastisement Child Exploitation: Low Level CSE Work Internet Safety for parents/Young People Healthy Relationships Youth Support/Activities: Low level Offending Behaviour Anti-Social Behaviour and Peer Pressure</p> <p>Please be mindful these are held and led by Targeted Early Help Teams (previously known as COG's). Multiple issues identified, and a multi-agency response required.</p>